



ASHBURTON CRANE HIRE

EST 2005

SAFE RELIABLE PROFESSIONAL

COMPANY PROFILE

Crane Hire Perth



CRANES



RIGGERS



TRANSPORT

08 9454 7000

ashburtoncranehire.com.au

10 Imperial Street High Wycombe

MOBILE CRANES PERTH

Ashburton Crane Hire operates a modern fleet of 10 mobile pick and carry and all-terrain cranes with lift capacity from 20 tonne to 100 tonne for Perth metro and all country areas. We cover all aspects of crane hire. No matter what the task Ashburton Crane Hire can provide the right crane, equipment and expertise to get your job completed.

OUR STRENGTHS

- MANAGEMENT TEAM HAS OVER 23 YEARS CRANE INDUSTRY EXPERIENCE
- MANAGEMENT TEAM IS HAND-PICKED FOR THEIR PROFESSIONAL EXPERTISE AND COMMITMENT TO CRANE HIRE GIVING US A COMPETITIVE EDGE OVER OUR RIVALS
- SAFE AND RELIABLE CRANE HIRE SERVICE 24/7
- MODERN FLEET OF MOBILE ALL-TERRAIN CRANES FRANNA CRANES AND RIGGING TRUCKS
- COMPREHENSIVE SAFETY MANAGEMENT SYSTEM
- KRANEXPERT AND LIEBHERR LIFT STUDY PROGRAMMES
- FREE SITE INSPECTIONS AND APPRAISALS

We also have semi-trailers, Isuzu rigging trucks and specialised lifting equipment.



WHAT WE DO

1. CRANE HIRE

Ashburton Crane Hire operates a diverse fleet of modern mobile cranes with which to support you and your business. We have 10 cranes in our fleet ranging from 20 tonne cranes to 100 tonne all-terrain cranes, we have access to all-terrain cranes up to 750 tonne hydraulic or pin jib if required.

2. 24/7 CRANE SUPPORT

ACH operate an around the clock service 7 days a week. Let us know what you require and when and we will attend to every detail.

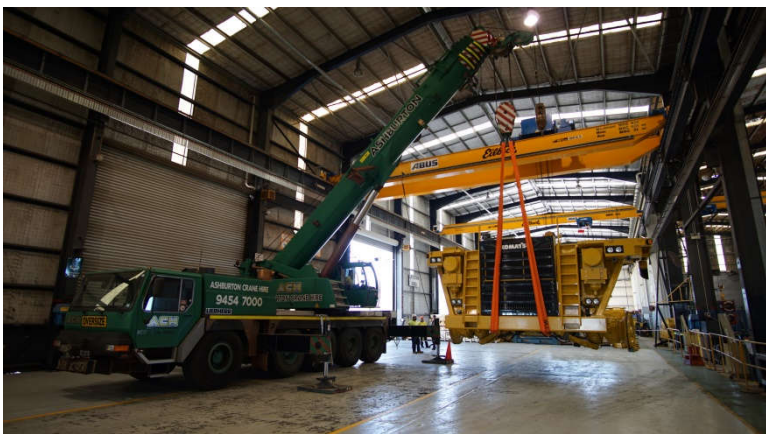
3. WHAT WE DO

Ashburton Crane Hire provides a general service to the Perth metro and all country areas. We lift anything anywhere at any time. If you require crane lifts at the Fremantle Wharf we are fully accredited.

- Your truck needs loading
- A train lifted into your backyard for a sleep out
- Steel erected for a project
- Excavator lifted onto a float
- Swimming pool or Spa put in your back yard
- Communication tower erected
- Patio lifted down



You name it we will do it. If there are any concerns we will be straight out to have a good look and measure up so there are no delays on the day.



CRANE HIRE

- 20T Franna cranes
- 25T Franna cranes
- 50T Liebherr All-Terrain cranes
- 70T Grove Rough Terrain cranes
- 80T Liebherr All-Terrain cranes
- 95T Liebherr All-Terrain cranes
- 100T Liebherr All-Terrain cranes
- Specialised Lifting Equipment



OH&S

“SAFETY IS NOT EXPENSIVE, IT’S PRICELESS”

ASHBURTON CRANE HIRE IS COMMITTED TO OCCUPATIONAL HEALTH, SAFETY AND THE ENVIRONMENT.

- Complying with statutory requirements, codes, standards and guidelines
- Setting up objectives and targets with the aim of eliminating work related incidents in relation to our activities, products and services.
- Defining roles and responsibilities for occupational health, safety and environment.

OUR STRATEGIES INCLUDE

- Ensuring occupational health, safety and environment management principles are included in all organisational planning activities.
- Providing ongoing education and training to all of our employees
- Consulting with employees and other parties to improve decision-making on occupational health, safety and environment matters.
- Ensuring incidents are investigated and lessons are learnt within the organization
- Distributing occupational health, safety and environment information, including this policy, to all employees and interested parties.
- Providing enough resources to ensure occupational health, safety and environment is a central part of the organisation.

RECENT PROJECTS

ASHBURTON CRANE HIRE can provide crane hire safely and efficiently for large projects.

Project ACH has been involved in

- Forrestfield Airport Link Project
- Perth Sports Stadium
- Crown Towers Resort
- Elizabeth Quay Project
- Chevron Wheatstone LNG Project, Onslow WA
- Rio Tinto Brockman 4 Iron Ore mine expansion, East Pilbara, WA
- Fortescue Metal Group, Christmas Creek Iron Ore Mine development, East Pilbara, WA
- Fortescue Metal Group, Solomon Iron Ore Mine expansion East Pilbara, WA
- BHP Worsley Alumina Expansion, Worsley WA
- Kwinana Desalination project Perth WA
- Perth to Bunbury Freeway Project, Perth, WA
- Hillgrove Gold Mine expansion. Armidale New South Wales

KEY PERSONNEL

GUY BLACK – Managing Director

Guy brings over 23 years crane industry experience to the table. Having worked on many construction projects and taxi crane hire in Perth over that time. Guy is very passionate about providing an outstanding crane service and looking after clients.

JAMES ORRINGE – Operations Manager

James is our Operations Manager with 16 years' experience in the construction and resource sectors dealing with all aspects of crane hire and transport, this enables James to problem solve and support any lift, no matter how big or small.

DEB SMITH – Administration

Deb has 40 years admin experience with MYOB and accounts and is a vital part of our team.

SAFE RELIABLE PROFESSIONAL

